

November 24, 2023

Kobe Airport Special Event Runway Night Walk Tour

- You may even enjoy Geminids meteor shower! -

Kansai Airports Kobe is excited to announce that it will hold the "Runway Night Walk Tour," a special event at Kobe Airport from midnight on December 15 to 16, 2023.

After the airport is closed for the night, visitors will walk along the runway listening to explanations about the airport in a fantastic atmosphere illuminated by airfield lights. In addition to that, the Geminids meteor shower is expected to be active on the day of the event, and you may be able to see* the beautiful starry sky on the runway. Please take this opportunity to enjoy a wonderful time in an area of the airport at night that is normally inaccessible. (*Depending on weather conditions)

Kansai Airports Group will continue to deliver exciting events to spread the appeal of the airports and the joys of travel to a broader range of people.

Date & time: 10:00 p.m. Friday, December 15, 2023, to 00:30 a.m. Saturday, December 16
(Registration opens at 9:45 p.m.)

Location: Terminal building and the restricted area of Kobe Airport

Contents: -Guided tour of the rooftop observation deck of the airport building, including the Miniature Museum, after it is closed.

-Guided night walk on the taxiway and runway after the airport operation hours (all on foot).

-Viewing of Geminids meteor shower and other stars, etc. on the runway

Target: Elementary school students and older

Capacity: Max. 45 people (up to five people per group)

Fee: 5,000 yen /person (tax included) *Payment on site, cash only

Application: Visit the website of Kobe Airport and fill out the application form.

Required information -Full name, age, and address of all participants

-Telephone number and email address of a group representative

<https://www.kairport.co.jp/event/2023nightwalk>

Deadline : Sunday, December 3, 2023

If we receive more than 45 applications, participants will be selected by a draw.

*Notification of selection result: Wednesday, December 6, 2023

Notes: -Public transportations is not available when the event finishes late at night. Participants are requested to travel to the airport/return home on their own by car or other means of transportation.

-For those driving to the airport, a parking fee of 150 yen per hour will be charged.

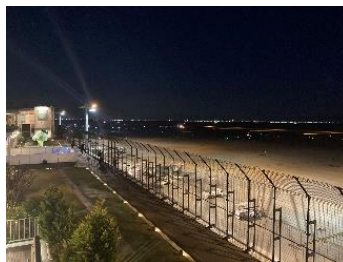
-Minors alone are not allowed to apply or participate. A parent or guardian must accompany minors.

And participants are required to present identification (driver's license, student ID, etc.) on the day of the event.

-The event is subject to change or cancellation due to weather conditions, or other reasons related to the management and operation of the facility.

*Canceled only in case of heavy rain

Photos



Contact:

Group Corporate Communications Department

Kansai Airports

pr@kansai-airports.co.jp

Shaping a New Journey



Kansai Airports was established by a consortium made up of VINCI Airports and ORIX Corporation as its core members. Kansai Airports took over the operations of Kansai International Airport (“KIX”) and Osaka International Airport (“ITAMI”) from New Kansai International Airport Company (“NKIAC”) and has been operating the two airports since April 1, 2016.

Kansai Airports Kobe, Kansai Airports’ wholly-owned subsidiary, took over the operations of Kobe Airport (“KOBE”) from Kobe City and started its business as an operating company on April 1, 2018.

Under the concept of “One Kansai Airports Group”, Kansai Airports group strives to continuously improve its services for all airport guests through appropriate investments and efficient operations, with safety and security being the top priority. Kansai Airports group aims to maximize the potential of the three airports, for the benefit of the communities they serve.

For more information, please visit : <http://www.kansai-airports.co.jp/en/>

Kansai Airports

Location	1-banchi, Senshu-kuko kita, Izumisano-shi, Osaka	Shareholders	ORIX 40%, VINCI Airports 40%, Other investors 20% ¹
Company Representatives	Representative Director and CEO:Yoshiyuki Yamaya Representative Director and Co-CEO: Benoit Rulleau		
Business Scope	Operation and management services, etc. of Kansai International Airport and Osaka International Airport		

Kansai Airports Kobe

Location	1-ban, Kobe-kuko, Chuo-ku, Kobe-shi, Hyogo	Shareholder	Kansai Airports 100%
Company Representatives	Representative Director and CEO: Yoshiyuki Yamaya Representative Director and Co-CEO: Benoit Rulleau		
Business Scope	Operation and management services, etc. of Kobe Airport		



Established in 1964, ORIX Group has grown into a diverse corporate group active worldwide in financing and investment, life insurance, banking, asset management, real estate, concession, environment and energy, automobile-related services, industrial/ICT equipment, ships, and aircraft. ORIX operates in around 30 countries and regions with approximately 35,000 people. Its Purpose, “Finding Paths. Making Impacts.” which defines why ORIX exists in our world. With this Purpose, ORIX will unite globally to help our world develop in a better way.

For more details, please visit our website: <https://www.orix.co.jp/grp/en/>



The world’s leading private airport operator, VINCI Airports operates more than 70 airports in 13 countries. Thanks to its expertise as a global integrator, VINCI Airports develops, finances, builds and manages airports by providing its investment capacity and its know-how in optimizing operational performance, modernizing infrastructure and managing their operations and environmental transition. VINCI Airports is the first airport operator to have committed to an international environmental strategy in 2016, to achieve the goal of net zero emissions across its entire network by 2050.

For more details, please visit our website: www.vinci-airports.com

¹ ASICS Corporation; Iwatani Corporation; Osaka Gas Co., Ltd.; Obayashi Corporation; OMRON Corporation; The Kansai Electric Power Company, Incorporated; Kintetsu Group Holding Co., Ltd.; Keihan Holdings Co., Ltd.; Suntory Holdings Limited; JTB Corp.; Sekisui House, Ltd.; Daikin Industries, Ltd.; Daiwa House Industry Co., Ltd.; Takenaka Corporation; Nankai Electric Railway Co., Ltd.; NIPPON TELEGRAPH AND TELEPHONE WEST CORPORATION; Panasonic Holdings Corporation; Hankyu Hanshin Holdings, Inc.; Rengo Co., Ltd.; The Senshu Ikeda Bank, Ltd.; Kiyo Holdings, Inc.; The Bank of Kyoto, Ltd.; THE SHIGA BANK, LTD.; The Nanto Bank, Ltd.; Nippon Life Insurance Company; Mizuho Bank, Ltd.; Sumitomo Mitsui Trust Bank, Limited; MUFG Bank, Ltd.; Resona Bank, Limited; and the Private Finance Initiative Promotion Corporation of Japan.