

October 06, 2023

KIX certified for its seaweed beds on the seawalls by the Ministry of the Environment as a “natural symbiosis site” - Contributing to biodiversity conservation in Osaka Bay -

Kansai Airports is delighted to announce that the seaweed beds that spread across the seawalls of Kansai International Airport (KIX) were certified as “a natural symbiosis site” by the Ministry of the Environment.

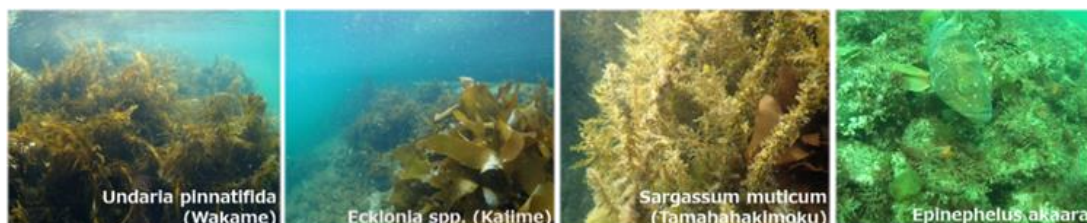
The “natural symbiosis site” certification program is a new system launched by the Ministry of the Environment officially this fiscal year, which certifies areas where biodiversity is conserved through initiatives and efforts by private sectors. The program aims to certify at least 100 sites in 2023, and the seaweed beds on the seawalls of the KIX islands were certified as one of them. KIX is the only airport certified under this program to date.

KIX is the world's first full-scale offshore airport, built by reclaiming the land 5 km off the coast of Senshu. And the vision since the start of the airport construction has been to make it an environmentally friendly airport. With various measures, such as adoption of gently sloping rubble mound seawalls for most of the seawalls, seaweed seed planting, and conservation based on the results of monitoring surveys, the seaweed beds around KIX now represent about 20% of the seaweed beds in Osaka Bay, providing habitats for a variety of fish and shellfish.

The seaweed beds at KIX were recognized and certified as a natural symbiosis site since the seaweed beds support the ecosystem and play a vital role in the conservation of biodiversity in Osaka Bay. Other recognition has come our way from various fields such as the one for our tireless efforts in creating the seaweed bed environment, following the certification and issuance of J Blue Credit* last December.

Kansai Airports Group continues to propel initiatives for decarbonization, circular economy and environmental symbiosis to contribute to a sustainable society.

* J Blue Credit: Blue carbon that is quantified and made tradable as credits. The seaweed beds at KIX were certified and issued with the J Blue Credit in December 2022 for the absorbed CO₂ of 103.2 tons (for the 5 years from FY2017 to FY2021).



The seaweed beds around the KIX islands

■ "Natural Symbiosis Site" Certification Program

A "natural symbiosis site" refers to "an area where biodiversity is preserved through initiatives and efforts by private sectors. The certification is officially granted when companies or other entities submit applications for the certification that are then reviewed by the Ministry of the Environment. The certified areas are then registered to the international database as "OECM^{*1}" unless such areas overlap with already protected areas, such as national parks. Certified parties can use this certification to publicize their direct contribution to the global targets for biodiversity conservation, including the "30by30^{*2} target.

*1: OECM (Other Effective area-based Conservation Masures) refers to "areas where biodiversity within the areas is conserved" apart from protected areas.

*2: 30by30 (thirty by thirty) aims to effectively conserve more than 30% of land and sea as healthy ecosystems by 2030 in order to halt and reverse biodiversity loss by 2030 (nature positive). This was one of the targets included in the Kunming-Montreal Biodiversity Framework adopted at the Second Part of the Conference of the Parties to the Convention on Biological Diversity (COP15) in 2022.

For more information about the natural symbiosis site program (website of the Ministry of the Environment):

<https://policies.env.go.jp/nature/biodiversity/30by30alliance/kyousei/> (Japanese only)

Contact:

Kansai airports
Group Corporate Communications Department
pr@kansai-airports.co.jp



Kansai Airports was established by a consortium made up of VINCI Airports and ORIX Corporation as its core members. Kansai Airports took over the operations of Kansai International Airport ("KIX") and Osaka International Airport ("ITAMI") from New Kansai International Airport Company ("NKIAC") and has been operating the two airports since April 1, 2016.

Kansai Airports Kobe, Kansai Airports' wholly-owned subsidiary, took over the operations of Kobe Airport ("KOBE") from Kobe City and started its business as an operating company on April 1, 2018.

Under the concept of "One Kansai Airports Group", Kansai Airports group strives to continuously improve its services for all airport guests through appropriate investments and efficient operations, with safety and security being the top priority. Kansai Airports group aims to maximize the potential of the three airports, for the benefit of the communities they serve.

For more information, please visit : <http://www.kansai-airports.co.jp/en/>

Kansai Airports

Location	1-banchi, Senshu-kuko kita, Izumisano-shi, Osaka	Shareholders	ORIX 40%, VINCI Airports 40%, Other investors 20% ¹
Company Representatives	Representative Director and CEO: Yoshiyuki Yamaya Representative Director and Co-CEO: Benoit Rulleau		
Business Scope	Operation and management services, etc. of Kansai International Airport and Osaka International Airport		

Kansai Airports Kobe

Location	1-ban, Kobe-kuko, Chuo-ku, Kobe-shi, Hyogo	Shareholder	Kansai Airports 100%
Company Representatives	Representative Director and CEO: Yoshiyuki Yamaya Representative Director and Co-CEO: Benoit Rulleau		
Business Scope	Operation and management services, etc. of Kobe Airport		



ORIX Corporation is a financial services group which provides innovative products and services to its customers by constantly pursuing new businesses.

Established in 1964, from its start in the leasing business, ORIX has advanced into neighboring fields and is presently undertaking a wide range of businesses such as corporate finance, industrial/ICT equipment, environment and energy, automobile-related, real estate-related, private equity investment and concession, banking and life insurance businesses. Since entering Hong Kong in 1971, ORIX has been operating its businesses globally by establishing locations in about 30 countries and regions across the world.

Going forward, ORIX intends to utilize its strengths and expertise of always generating new value to contribute to society by engaging in corporate activities that instill vitality in its companies and workforce based on ORIX's unique business model that continues to evolve perpetually.

For more details, please visit our website: <https://www.orix.co.jp/grp/en/>



The world's leading private airport operator, VINCI Airports operates 72 airports in 13 countries. Thanks to its expertise as a global integrator, VINCI Airports develops, finances, builds and manages airports by providing its investment capacity and its know-how in optimizing operational performance, modernizing infrastructure and managing their operations and environmental transition. VINCI Airports is the first airport operator to have committed to an international environmental strategy in 2016, to achieve the goal of net zero emissions across its entire network by 2050.

For more details, please visit our website: www.vinci-airports.com

¹ ASICS Corporation; Iwatani Corporation; Osaka Gas Co., Ltd.; Obayashi Corporation; OMRON Corporation; The Kansai Electric Power Company, Incorporated; Kintetsu Group Holding Co., Ltd.; Keihan Holdings Co., Ltd.; Suntory Holdings Limited; JTB Corp.; Sekisui House, Ltd.; Daikin Industries, Ltd.; Daiwa House Industry Co., Ltd.; Takenaka Corporation; Nankai Electric Railway Co., Ltd.; NIPPON TELEGRAPH AND TELEPHONE WEST CORPORATION; Panasonic Holdings Corporation; Hankyu Hanshin Holdings, Inc.; Rengo Co., Ltd.; The Senshu Ikeda Bank, Ltd.; Kiyo Holdings, Inc.; The Bank of Kyoto, Ltd.; THE SHIGA BANK, LTD.; The Nanto Bank, Ltd.; Nippon Life Insurance Company; Mizuho Bank, Ltd.; Sumitomo Mitsui Trust Bank, Limited; MUFG Bank, Ltd.; Resona Bank, Limited; and the Private Finance Initiative Promotion Corporation of Japan.