

#空とツナガル、空でつなぐ



3 Ceramic Panels of Van Gogh Masterpiece “Sunflowers” to be exhibited at Kansai International Airport - Enjoy the world of Otsuka Museum of Art -

Kansai Airports is pleased to announce that 3 ceramic panels of Van Gogh masterpiece “Sunflowers” will be exhibited in Lounge KANSAI, the new lounge for the domestic area, at Kansai International Airport from Friday, December 2, 2022.

These are full-scale ceramic panel masterpieces produced by Otsuka Ohmi Ceramics Co., Ltd., which produces all the ceramic panel masterpieces on display at Otsuka Museum of Art in Naruto City, Tokushima Prefecture. This is the first time that 3 ceramic panel masterpieces of the “Sunflowers” series are exhibited at the same time outside Otsuka Museum of Art. One of the 3 pieces was reproduced using a photograph of the phantasmal “Sunflowers,” whose original was burnt in fire in Ashiya City, Hyogo Prefecture during air strikes in 1945. This ceramic panel piece is the only way you can enjoy the work in actual size. We have created this space with a wish that our customers can enjoy and feel comforted by the art pieces of the world-renowned artist, Van Gogh, up close as ceramic panel art pieces can be exhibited regardless of any exhibiting conditions.

Kansai International Airport is also a gateway to Setouchi and Shikoku regions including Awajishima and Naruto, where Otsuka Museum of Art is located, and we are actively engaged in promoting the appeal of these areas.

Kansai Airports Group will continue to create new travel experiences through initiatives to make our airports more enjoyable to our customers and by valuing the collaboration with surrounding areas.

*Otsuka Museum of Art is a ceramic panel masterpiece art museum with one of Japan’s largest permanent exhibition spaces (total floor area: 29,412m²) located in Naruto City, Tokushima Prefecture. The museum exhibits over 1,000 masterpieces of Western art, reproduced in full scale on ceramic panels using the specialized techniques of Otsuka Ohmi Ceramics, ranging from ancient murals to contemporary arts owned by more than 190 museums in 26 countries around the world. The museum has gathered masterpieces you have seen at least once in art books, including “Mona Lisa” by Leonardo da Vinci, “Sunflowers” by Van Gogh, “Guernica” by Picasso, so you can enjoy the masterpieces of museums around the world while being in Japan.

Exhibition Overview

Exhibits: 3 ceramic panel masterpieces from the Van Gogh “Sunflowers” series.

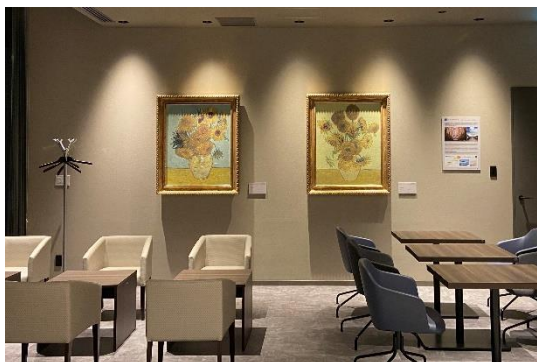
Exhibition period: From Friday, December 2, 2022.

Place: Lounge KANSAI, New Domestic Lounge, Kansai International Airport Terminal 1

*Lounge use is limited to ANA and JAL lounge users. And “the phantasmal Sunflowers” is only available to users of Room B. Please be noted that depending on the usage situation, you may not be able to see the art pieces.

Installation image

You can enjoy 3 of the 7 “Sunflowers in a vase” painted by Van Gogh.



Left: from the collection of Neue Pinakothek (Munich)
Right: from the collection of the National Gallery (London)



The phantasmal “Sunflowers” destroyed by fire in Ashiya City, Hyogo Prefecture in 1945.

Contact information for this release

Public Relations, Group Corporate Communications Department,
Kansai Airports Tel: +81-72-455-2201



Kansai Airports was established by a consortium made up of VINCI Airports and ORIX Corporation as its core members. Kansai Airports took over the operations of Kansai International Airport (“KIX”) and Osaka International Airport (“ITAMI”) from New Kansai International Airport Company (“NKIAC”) and has been operating the two airports since April 1, 2016.

Kansai Airports Kobe, Kansai Airports’ wholly-owned subsidiary, took over the operations of Kobe Airport (“KOBE”) from Kobe City and started its business as an operating company on April 1, 2018.

Under the concept of “One Kansai Airports Group”, Kansai Airports group strives to continuously improve its services for all airport guests through appropriate investments and efficient operations, with safety and security being the top priority. Kansai Airports group aims to maximize the potential of the three airports, for the benefit of the communities they serve.

For more information, please visit : <http://www.kansai-airports.co.jp/en/>

Kansai Airports

Location	1-banchi, Senshu-kuko kita, Izumisano-shi, Osaka	Shareholders	ORIX 40%, VINCI Airports 40%, Other investors 20% ¹
Company Representatives	Representative Director and CEO:Yoshiyuki Yamaya Representative Director and Co-CEO: Benoit Rulleau		
Business Scope	Operation and management services, etc. of Kansai International Airport and Osaka International Airport		

Kansai Airports Kobe

Location	1-ban, Kobe-kuko, Chuo-ku, Kobe-shi, Hyogo	Shareholder	Kansai Airports 100%
Company Representatives	Representative Director and CEO: Yoshiyuki Yamaya Representative Director and Co-CEO: Benoit Rulleau		
Business Scope	Operation and management services, etc. of Kobe Airport		



ORIX Corporation is a financial services group which provides innovative products and services to its customers by constantly pursuing new businesses.

Established in 1964, from its start in the leasing business, ORIX has advanced into neighboring fields and is presently undertaking a wide range of businesses such as corporate finance, industrial/ICT equipment, environment and energy, automobile-related, real estate-related, private equity investment and concession, banking and life insurance businesses. Since entering Hong Kong in 1971, ORIX has been operating its businesses globally by establishing locations in about 30 countries and regions across the world.

Going forward, ORIX intends to utilize its strengths and expertise of always generating new value to contribute to society by engaging in corporate activities that instill vitality in its companies and workforce based on ORIX’s unique business model that continues to evolve perpetually.

For more details, please visit our website: <https://www.orix.co.jp/grp/en/>



The world’s leading private airport operator, VINCI Airports operates 53 airports in 12 countries in Europe, Asia and the Americas. Thanks to its expertise as a global integrator, VINCI Airports develops, finances, builds and manages airports by providing its investment capacity and its know-how in optimizing operational performance, modernizing infrastructures and managing their operations. environmental transition. VINCI Airports is the first airport operator to have committed to an international environmental strategy in 2016, to achieve the goal of net zero emissions across its entire network by 2050.

For more details, please visit our website: www.vinci-airports.com

¹ ASICS Corporation; Iwatani Corporation; Osaka Gas Co., Ltd.; Obayashi Corporation; OMRON Corporation; The Kansai Electric Power Company, Incorporated; Kintetsu Group Holding Co., Ltd.; Keihan Holdings Co., Ltd.; Suntory Holdings Limited; JTB Corp.; Sekisui House, Ltd.; Daikin Industries, Ltd.; Daiwa House Industry Co., Ltd.; Takenaka Corporation; Nankai Electric Railway Co., Ltd.; NIPPON TELEGRAPH AND TELEPHONE WEST CORPORATION; Panasonic Corporation; Hankyu Hanshin Holdings, Inc.; Rengo Co., Ltd.; The Senshu Ikeda Bank, Ltd.; Kiyo Holdings, Inc.; The Bank of Kyoto, Ltd.; THE SHIGA BANK, LTD.; The Nanto Bank, Ltd.; Nippon Life Insurance Company; Mizuho Bank, Ltd.; Sumitomo Mitsui Trust Bank, Limited; MUFG Bank, Ltd.; Resona Bank, Limited; and the Private Finance Initiative Promotion Corporation of Japan.