

May 23, 2024

## Platinum Award to KIX Seaweed Bed Project at Green Airports Recognition 2024

Kansai Airports is pleased to announce that our project “Creating a rich seaweed bed and blue carbon” at Kansai International Airport (KIX) received the Platinum Award, the highest award, in the ACI Green Airports Recognition 2024, an event organized by ACI Asia-Pacific & Middle East\*. The Green Airports Recognition is an open call for projects related to the sustainability in the environmental field for airports in the Asia-Pacific and Middle East region, and awards are given to airports that have achieved outstanding results. The theme for 2024 was "Biodiversity and Nature-Based Solutions". We set our eyes on the project of creation and conservation of seaweed beds which we have been working on continuously since the construction of the airport and made an entry to the contest as a project that contributes to the conservation of biodiversity at the airport and in the region and to the reduction of CO<sub>2</sub> emissions through our seaweed beds.

Our Representative Director & CEO Yoshiyuki Yamaya attended the ceremony and received the award at the ACI Asia Pacific Middle East Regional Assembly in Riyadh, Saudi Arabia held on Wednesday, May 22.

Kansai Airports Group will continue to promote company-wide efforts to reduce environmental impact and contribute to the realization of a sustainable society through the operation of airports, which are public infrastructure.

\*What is ACI Asia-Pacific & Middle East?

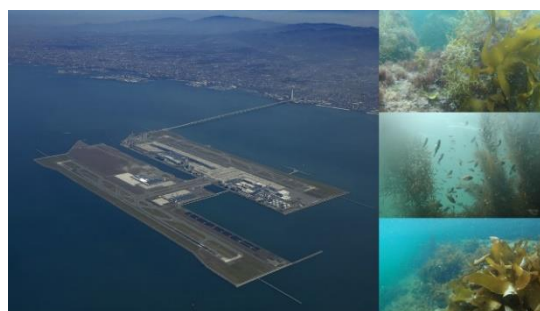
It is one of the organizations of ACI (Airports Council International). Representing 131 members operating 617 airports in 49 countries and territories in Asia and the Middle East, this international organization, headquartered in Hong Kong, provides a variety of information on standards and policies for airports.



At the ceremony



The trophy



Seaweed beds at KIX seawall

## **About Green Airports Recognition 2024**

Theme: Biodiversity and Nature-Based Solutions

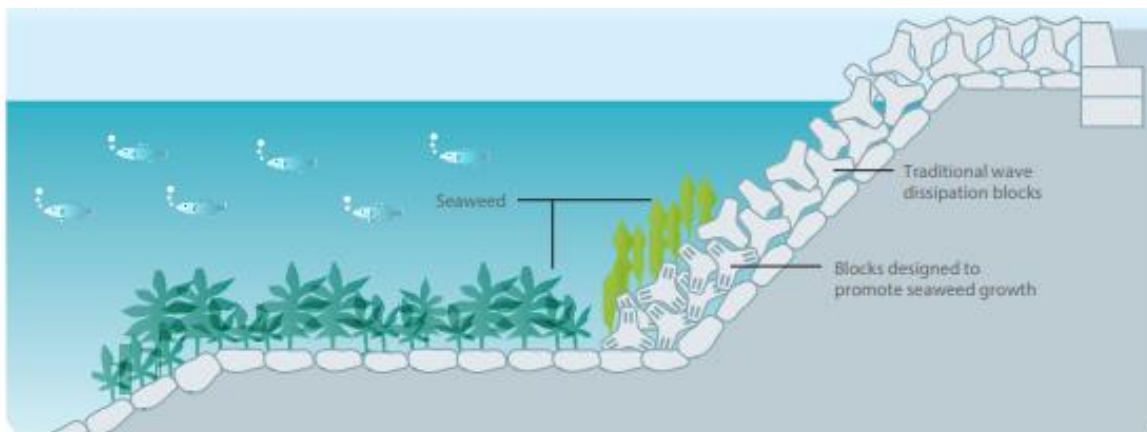
Award-winning project: Creating a rich seaweed bed and blue carbon

Awards are divided into categories based on airport size and "Platinum," "Gold," and "Silver" awards are given according to the selection criteria. Kansai Airports received the Platinum Award with the highest score in the "Between 15-35

### **Creation of seaweed bed environment at KIX**

As an offshore airport, KIX has been actively working to create a seaweed bed environment that provides a habitat for marine life in harmony with the marine environment since the development plan of the airport. The gently sloping rubble mound seawalls used for most of the seawalls allow light to reach a wide area, making it easy for seaweed to grow. Our efforts to plant seaweed and preserving it by continuously monitoring the status have resulted in the creation of a rich seaweed bed environment, leading to the diversity of the marine ecosystem.

Drawing of the sloping rubble mound seawalls



### **Contact:**

Kansai Airports

Group Corporate Communications Department

[pr@kansai-airports.co.jp](mailto:pr@kansai-airports.co.jp)

## Shaping a New Journey



Kansai Airports was established by a consortium made up of VINCI Airports and ORIX Corporation as its core members. Kansai Airports took over the operations of Kansai International Airport (“KIX”) and Osaka International Airport (“ITAMI”) from New Kansai International Airport Company (“NKIAC”) and has been operating the two airports since April 1, 2016.

Kansai Airports Kobe, Kansai Airports’ wholly-owned subsidiary, took over the operations of Kobe Airport (“KOBE”) from Kobe City and started its business as an operating company on April 1, 2018.

Under the concept of “One Kansai Airports Group”, Kansai Airports group strives to continuously improve its services for all airport guests through appropriate investments and efficient operations, with safety and security being the top priority. Kansai Airports group aims to maximize the potential of the three airports, for the benefit of the communities they serve.

For more information, please visit : <http://www.kansai-airports.co.jp/en/>

### Kansai Airports

Location	1-banchi, Senshu-kuko kita, Izumisano-shi, Osaka	Shareholders	ORIX 40%, VINCI Airports 40%, Other investors 20% <sup>1</sup>
Company Representatives	Representative Director and CEO:Yoshiyuki Yamaya Representative Director and Co-CEO: Benoit Rulleau		
Business Scope	Operation and management services, etc. of Kansai International Airport and Osaka International Airport		

### Kansai Airports Kobe

Location	1-ban, Kobe-kuko, Chuo-ku, Kobe-shi, Hyogo	Shareholder	Kansai Airports 100%
Company Representatives	Representative Director and CEO: Yoshiyuki Yamaya Representative Director and Co-CEO: Benoit Rulleau		
Business Scope	Operation and management services, etc. of Kobe Airport		



Established in 1964, ORIX Group has grown into a diverse corporate group active worldwide in financing and investment, life insurance, banking, asset management, real estate, concession, environment and energy, automobile-related services, industrial/ICT equipment, ships, and aircraft. ORIX operates in around 30 countries and regions with approximately 35,000 people. Its Purpose, “Finding Paths. Making Impacts.” which defines why ORIX exists in our world. With this Purpose, ORIX will unite globally to help our world develop in a better way.

For more details, please visit our website: <https://www.orix.co.jp/grp/en/>



The world’s leading private airport operator, VINCI Airports operates more than 70 airports in 13 countries. Thanks to its expertise as a global integrator, VINCI Airports develops, finances, builds and manages airports by providing its investment capacity and its know-how in optimizing operational performance, modernizing infrastructure and managing their operations and environmental transition. VINCI Airports is the first airport operator to have committed to an international environmental strategy in 2016, to achieve the goal of net zero emissions across its entire network by 2050.

For more details, please visit our website: [www.vinci-airports.com](http://www.vinci-airports.com)

<sup>1</sup> ASICS Corporation; Iwatani Corporation; Osaka Gas Co., Ltd.; Obayashi Corporation; OMRON Corporation; The Kansai Electric Power Company, Incorporated; Kintetsu Group Holding Co., Ltd.; Keihan Holdings Co., Ltd.; Suntory Holdings Limited; JTB Corp.; Sekisui House, Ltd.; Daikin Industries, Ltd.; Daiwa House Industry Co., Ltd.; Takenaka Corporation; Nankai Electric Railway Co., Ltd.; NIPPON TELEGRAPH AND TELEPHONE WEST CORPORATION; Panasonic Holdings Corporation; Hankyu Hanshin Holdings, Inc.; Rengo Co., Ltd.; The Senshu Ikeda Bank, Ltd.; Kiyo Holdings, Inc.; The Bank of Kyoto, Ltd.; THE SHIGA BANK, LTD.; The Nanto Bank, Ltd.; Nippon Life Insurance Company; Mizuho Bank, Ltd.; Sumitomo Mitsui Trust Bank, Limited; MUFG Bank, Ltd.; Resona Bank, Limited; and the Private Finance Initiative Promotion Corporation of Japan.