



Sora Market to open at Kobe Airport

Enjoy bread, sweets and fashion accessories from Kobe City

Kansai Airports Kobe is excited to announce that Kobe Airport Sora Market is coming to Kobe Airport (KOBE). In the market that will be held in the public space of the terminal, pop-up shops will showcase a wide selection of local items.

The first pop-up shop will offer Bakery Kobedo's high-quality white bread that carries a slight aroma of sake lees. There will also be a pop-up shop selling bread and sweets of Le Pan Kobe Kitano, the famous bakery of Hotel La Suite Kobe Harborland. Furthermore, visitors can find various unique and stylish fashion accessories of local brands. These will make perfect souvenirs from Kobe.

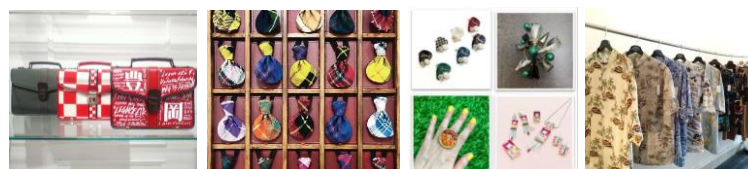
Kansai Airports Group will continue to create an enjoyable travel experience that will make customers more comfortable and excited with a variety of ideas.

Kobe Airport Sora Market

Shop: Bakery Kobedo
Period: 7 days from July 30 (Fri.) to August 5 (Thur.)
Menu: High-quality white bread



Shop: Legare età, Taylor Kofuji,
BIJOUX KIQUE, Meniamaru
Period: 14 days from August 4 (Wed.) to August 17 (Tue.)
Merchandise: Fashion accessories



Shop: Le Pan Kobe Kitano
Period: 7 days from August 7 (Sat.) to August 9 (Mon.)
and from August 12 (Thur.) to August 15 (Sun.)
Menu: Freshly baked bread, sweets



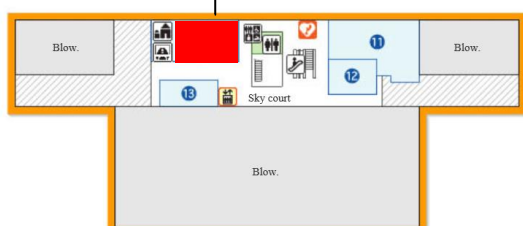
Upcoming pop-up shops

Kansai Airports Kobe is considering offering a variety of items such as bento lunch boxes, bread of Kansai's famous bakeries, and sweets from Nishinomiya City, as well as conveying the charms of the destinations connected to the airport.

*The details will be announced on the airport's website and Facebook.

Location:

Level 3, Terminal Here



*Visitors can use the public space when there are no pop-up shops.

Contact Information

Public Relations
Group Corporate Communications Department
TEL: +81-72-455-2201

Shaping a New Journey



Kansai Airports was established by a consortium made up of VINCI Airports and ORIX Corporation as its core members. Kansai Airports took over the operations of Kansai International Airport (“KIX”) and Osaka International Airport (“ITAMI”) from New Kansai International Airport Company (“NKIAC”) and has been operating the two airports since April 1, 2016. Kansai Airports Kobe, Kansai Airports’ wholly-owned subsidiary, took over the operations of Kobe Airport (“KOBE”) from Kobe City and started its business as an operating company on April 1, 2018.

Under the concept of “One Kansai Airports Group”, Kansai Airports group strives to continuously improve its services for all airport guests through appropriate investments and efficient operations, with safety and security being the top priority. Kansai Airports group aims to maximize the potential of the three airports, for the benefit of the communities they serve.

For more information, please visit : <http://www.kansai-airports.co.jp/en/>

Kansai Airports

Location	1-banchi, Senshu-kuko kita, Izumisano-shi, Osaka	Shareholders	ORIX 40%, VINCI Airports 40%, Other investors 20% ¹
Company Representatives	Representative Director and CEO:Yoshiyuki Yamaya Representative Director and Co-CEO: Benoit Rulleau		
Business Scope	Operation and management services, etc. of Kansai International Airport and Osaka International Airport		

Kansai Airports Kobe

Location	1-ban, Kobe-kuko, Chuo-ku, Kobe-shi, Hyogo	Shareholder	Kansai Airports 100%
Company Representatives	Representative Director and CEO: Yoshiyuki Yamaya Representative Director and Co-CEO: Benoit Rulleau		
Business Scope	Operation and management services, etc. of Kobe Airport		



About ORIX:

ORIX Corporation (TSE: 8591; NYSE: IX) is a financial services group which provides innovative products and services to its customers by constantly pursuing new businesses.

Established in 1964, from its start in the leasing business, ORIX has advanced into neighboring fields and at present has expanded into lending, investment, life insurance, banking, asset management, automobile related, real estate and environment and energy related businesses. Since entering Hong Kong in 1971, ORIX has spread its businesses globally by establishing locations in 31 countries and regions across the world.

Going forward, ORIX intends to utilize its strengths and expertise, which generate new value, to establish an independent ORIX business model that continues to evolve perpetually. In this way, ORIX will engage in business activities that instill vitality in its companies and workforce, and thereby contribute to society. For more details, please visit our website: <https://www.orix.co.jp/grp/en/>

(As of March 31, 2021)



VINCI Airports, the leading private airport operator in the world, manages 45 airports in 12 countries in Europe, Asia and the Americas. We harness our expertise as a comprehensive integrator to develop, finance, build and operate airports, while leveraging our investment capability and expertise in optimising operational performance, modernising infrastructure and driving environmental transition. VINCI Airports became the first airport operator to start rolling out an international environmental strategy, in 2016, with a view to achieving net zero emissions throughout its network by 2050.

www.vinci-airports.com

¹ ASICS Corporation; Iwatani Corporation; Osaka Gas Co., Ltd.; Obayashi Corporation; OMRON Corporation; The Kansai Electric Power Company, Incorporated; Kintetsu Group Holding Co., Ltd.; Keihan Holdings Co., Ltd.; Suntory Holdings Limited; JTB Corp.; Sekisui House, Ltd.; Daikin Industries, Ltd.; Daiwa House Industry Co., Ltd.; Takenaka Corporation; Nankai Electric Railway Co., Ltd.; NIPPON TELEGRAPH AND TELEPHONE WEST CORPORATION; Panasonic Corporation; Hankyu Hanshin Holdings, Inc.; Rengo Co., Ltd.; The Senshu Ikeda Bank, Ltd.; Kryo Holdings, Inc.; The Bank of Kyoto, Ltd.; THE SHIGA BANK, LTD.; The Nanto Bank, Ltd.; Nippon Life Insurance Company; Mizuho Bank, Ltd.; Sumitomo Mitsui Trust Bank, Limited; MUFG Bank, Ltd.; Resona Bank, Limited; and the Private Finance Initiative Promotion Corporation of Japan.