



Kansai Airports Group sets a long-term target aiming for net zero greenhouse gas emissions and a decarbonized society

Kansai Airports Group is pleased to announce that it has set a long-term target to reach net zero greenhouse gas emissions by 2050, as part of its efforts to prevent global warming.

The international community and Japan alike have been committed to the goal of realizing a decarbonized society with net zero greenhouse gas emissions by 2050. At Kansai Airports Group, various steps have been taken to reduce the environmental footprint of the three airports it operates (Kansai International Airport, Osaka International Airport, and Kobe Airport). We will continue to work on a medium- to long-term plan and promote the measures for achieving carbon neutral status by further reducing energy consumption and using renewable energy.

Kansai Airports Group is committed to further accelerating the efforts to reduce environmental impacts in pursuit of a harmonious coexistence between the airports and their surrounding environment.

■ Long-term target for 2050

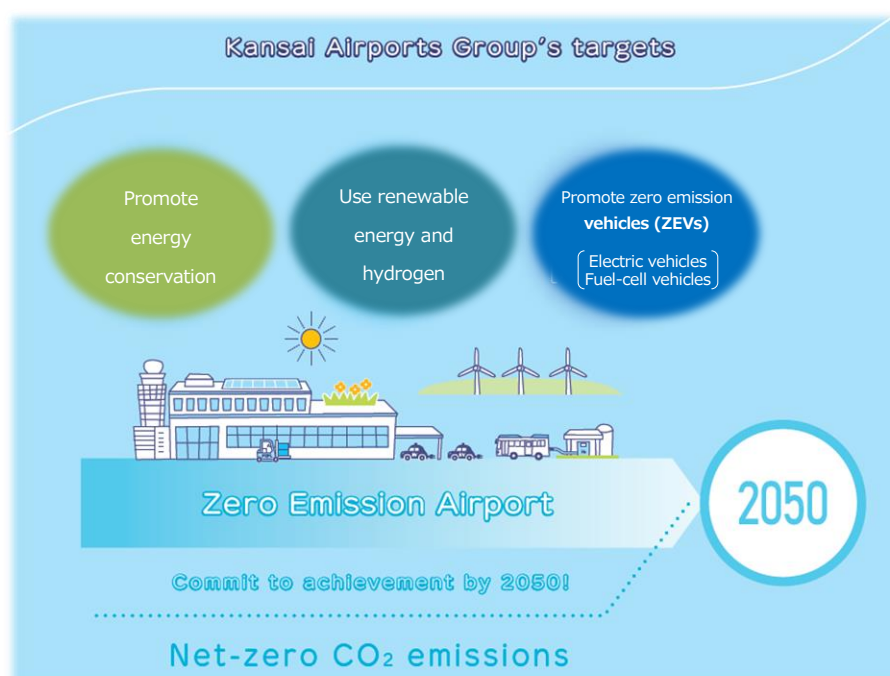
| | FY2016 (Baseline) | FY2030 | FY2050 |
|---|--|----------------------|-------------------------------|
| Kansai Airports Group's CO2 emissions Scope 1 and Scope 2 ^{*1} | 113 thousand tons ^{*2} | 40% reduction | Net zero ^{*3} |

^{*1} Scope 1: Direct emissions from fuel combustion, etc. Scope 2: Indirect emissions through the purchase of electricity

^{*2} Calculated for the fiscal year based on the figures provided by the Airport Carbon Accreditation

Figures for Kobe Airport include the estimate for the period before the operation by Kansai Airports Kobe

^{*3} Includes the purchase of green energy, etc.



Contact Information

Public Relations

Group Corporate Communications Department

TEL: +81-72-455-2201

KANSAI AIRPORTS



Kansai Airports was established by a consortium made up of VINCI Airports and ORIX Corporation as its core members. Kansai Airports took over the operations of Kansai International Airport ("KIX") and Osaka International Airport ("ITAMI") from New Kansai International Airport Company ("NKIAC") and has been operating the two airports since April 1, 2016.

Kansai Airports Kobe, Kansai Airports' wholly-owned subsidiary, took over the operations of Kobe Airport ("KOBE") from Kobe City and started its business as an operating company on April 1, 2018.

Under the concept of "One Kansai Airports Group", Kansai Airports group strives to continuously improve its services for all airport guests through appropriate investments and efficient operations, with safety and security being the top priority. Kansai Airports group aims to maximize the potential of the three airports, for the benefit of the communities they serve.

For more information, please visit : <http://www.kansai-airports.co.jp/en/>

Kansai Airports

| | | | |
|-------------------------|---|--------------|--|
| Location | 1-banchi, Senshu-kuko kita, Izumisano-shi, Osaka | Shareholders | ORIX 40%, VINCI Airports 40%, Other investors 20% ¹ |
| Company Representatives | Representative Director and CEO: Yoshiyuki Yamaya Representative Director and Co-CEO: Benoit Rulleau | | |
| Business Scope | Operation and management services, etc. of Kansai International Airport and Osaka International Airport | | |

Kansai Airports Kobe

| | | | |
|-------------------------|---|-------------|----------------------|
| Location | 1-ban, Kobe-kuko, Chuo-ku, Kobe-shi, Hyogo | Shareholder | Kansai Airports 100% |
| Company Representatives | Representative Director and CEO: Yoshiyuki Yamaya Representative Director and Co-CEO: Benoit Rulleau | | |
| Business Scope | Operation and management services, etc. of Kobe Airport | | |



ORIX Corporation (TSE: 8591; NYSE: IX) is an opportunistic, diversified, innovation-driven global powerhouse with a proven track record of profitability. Established in 1964, ORIX at present operates a diverse portfolio of businesses in the operations, financial services, and investment spaces. ORIX's highly complementary business activities span industries including: energy, private equity, infrastructure, automotive, ship and aircraft, real estate and retail financial services. ORIX has also spread its business globally by establishing locations in a total of 37 countries and regions across the world. Through its business activities, ORIX has long been committed to corporate citizenship and environmental sustainability. For more details, please visit our website:

<http://www.orix.co.jp/grp/en/>



VINCI Airports, the leading private airport operator in the world, manages 45 airports in 12 countries in Europe, Asia and the Americas. We harness our expertise as a comprehensive integrator to develop, finance, build and operate airports, while leveraging our investment capability and expertise in optimising operational performance, modernising infrastructure and driving environmental transition. VINCI Airports became the first airport operator to start rolling out an international environmental strategy, in 2016, with a view to achieving net zero emissions throughout its network by 2050.

www.vinci-airports.com

¹ ASICS Corporation; Iwatani Corporation; Osaka Gas Co., Ltd.; Obayashi Corporation; OMRON Corporation; The Kansai Electric Power Company, Incorporated; Kintetsu Group Holding Co., Ltd.; Keihan Holdings Co., Ltd.; Suntory Holdings Limited; JTB Corp.; Sekisui House, Ltd.; Daikin Industries, Ltd.; Daiwa House Industry Co., Ltd.; Takenaka Corporation; Nankai Electric Railway Co., Ltd.; NIPPON TELEGRAPH AND TELEPHONE WEST CORPORATION; Panasonic Corporation; Hankyu Hanshin Holdings, Inc.; Rengo Co., Ltd.; The Senshu Ikeda Bank, Ltd.; Kiyo Holdings, Inc.; The Bank of Kyoto, Ltd.; THE SHIGA BANK, LTD.; The Nanto Bank, Ltd.; Nippon Life Insurance Company; Mizuho Bank, Ltd.; Sumitomo Mitsui Trust Bank, Limited; MUFG Bank, Ltd.; Resona Bank, Limited; and the Private Finance Initiative Promotion Corporation of Japan.

Long-term target aiming for net zero greenhouse gas emissions and a decarbonized society

March 5, 2021

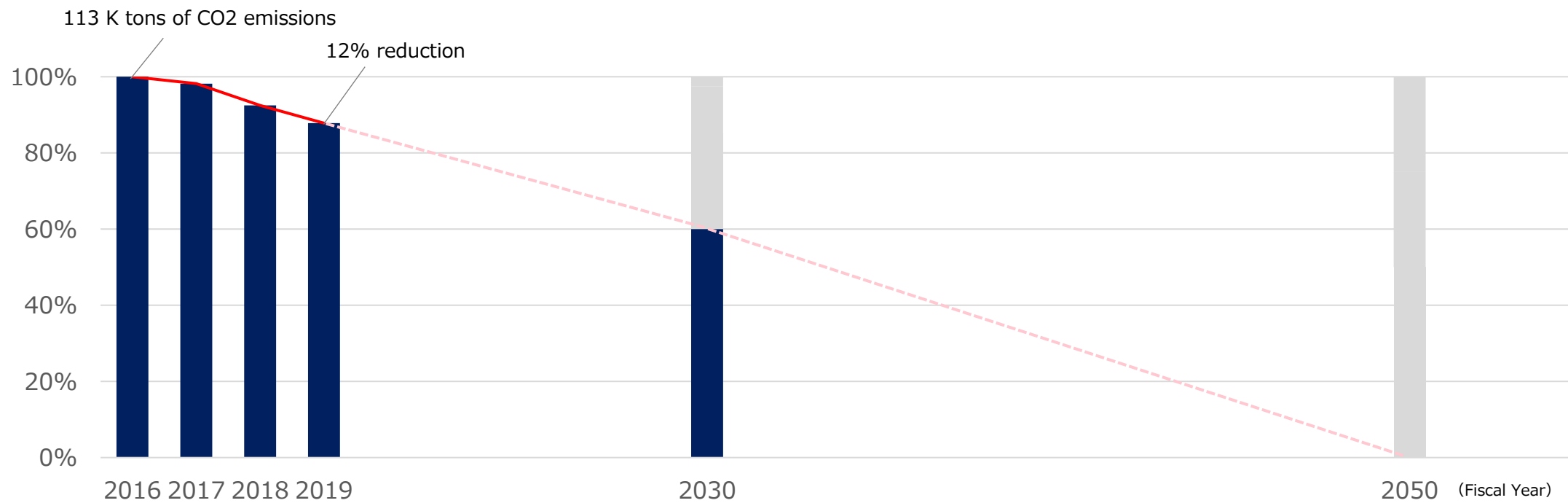


Shaping a New Journey



Long-term Target

| | FY2016 (Baseline) | FY2030 | FY2050 |
|--|---------------------------------|---------------|------------------------|
| Kansai Airports Group's CO2 emissions Scope 1 and Scope 2 ^{*1} | 113 thousand tons ^{*2} | 40% reduction | Net zero ^{*3} |

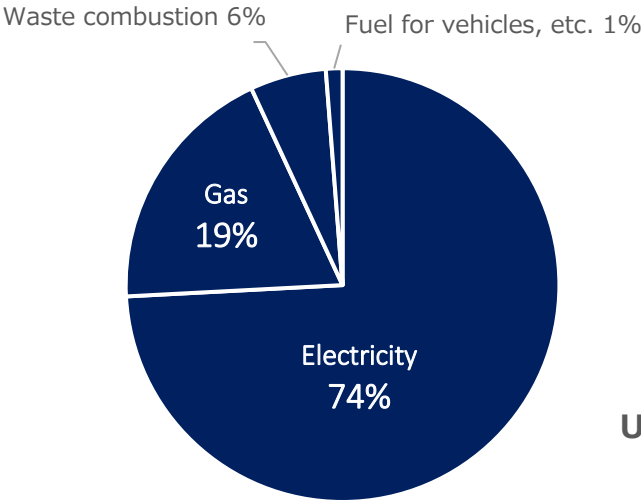


Reduction of CO2 emissions

^{*1} Scope 1: Direct emissions from fuel combustion, etc. Scope 2: Indirect emissions through the purchase of electricity
^{*2} Calculated for the fiscal year based on the figures provided by the Airport Carbon Accreditation
Figures for Kobe Airport include the estimate for the period before the operation by Kansai Airports Kobe
^{*3} Includes the purchase of green energy, etc.

Major Initiatives

**Breakdown of Kansai Airports
Group's CO2 emission sources**^{*1}
(Scope 1 and 2)



Promote energy conservation

- ✓ Introduce high-efficiency heat source equipment
- ✓ Optimize outside air intake
- ✓ Insulation and solar radiation protection
- ✓ Optimize air-conditioning control

Air conditioner

- ✓ Fully switch to LED lighting
- ✓ Enhance sensors and brightness control

Lighting

- ✓ Visualize and analyze energy consumption using BEMS^{*2}
- ✓ Optimize operations using AI

Operations

Use renewable energy and hydrogen

- ✓ Install more solar panels
- ✓ Promote the Hydrogen Grid Project

Promote ZEVs^{*3}

- ✓ Replace existing service vehicles with electric and fuel-cell vehicles

^{*1} For the period from October 2018 to September 2019

^{*2} Building Energy Management System

^{*3} Zero emission vehicles

Roadmap to Net Zero CO2 Emissions



CO2 emissions

40% reduction

Net zero

Current reduction

Emissions from purchased electricity

Existing measures

Energy saving

- High-efficiency heat source equipment
- LED lighting
- Operational optimization (analysis using BEMS)
- Other energy saving measures

Renewable energy

- T2 solar panels

Additional measures

Energy saving

- Energy saving in T1 renovation
- Optimization of air-conditioning control
- Full switch to LED lighting with sensors and brightness control
- Operational optimization using AI

Renewable energy

- Additional solar panels

ZEV

- Zero emission vehicles

- ✓ Purchase of green energy
- ✓ Further energy saving

✓ Technological innovation

- ✓ Use of hydrogen
- ✓ Use of city gas produced through methanation
- ✓ Carbon capture and methanation to reduce emissions from waste combustion
- ✓ Full switch to zero emission vehicles

Initiatives to Date

Energy conservation



Improve efficiency of air-conditioning equipment



Introduce LEDs in terminal buildings



Insulation and solar radiation protection



Promote energy-saving operations

Renewable energy and hydrogen



Install solar panels on the roof of terminal buildings



Promote the hydrogen project

ZEVs



Introduce EVs and FCVs



Introduce fuel-cell forklifts

Reference

- Kansai Airports Environmental Statement

<http://www.kansai-airports.co.jp/en/efforts/environment/efforts/message.html>

- One Eco-Airport Plan: 5-Year Environmental Plan for FY2018 to FY2022

<http://www.kansai-airports.co.jp/en/efforts/environment/efforts/oneecoairport.html>

- Environmental Report 2020

<http://www.kansai-airports.co.jp/en/efforts/environment/efforts/reports.html>