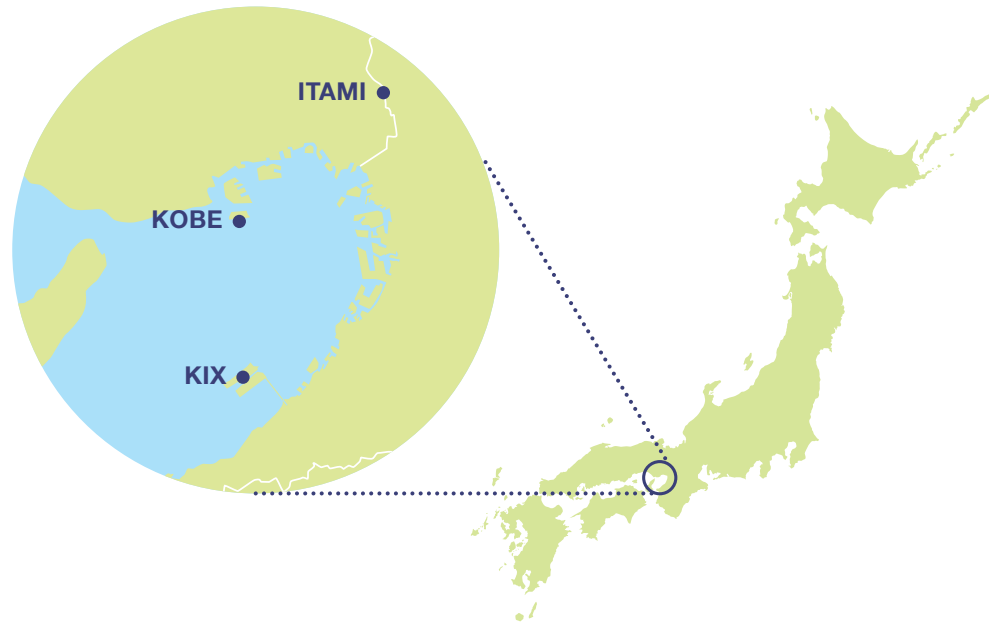


Shaping a New Journey



Kansai International Airport  
Osaka International Airport  
Kobe Airport

# Kansai Airports Group Environmental Plan



## KIX Kansai International Airport



### Kansai International Airport

KIX was built five kilometers off the coast of the Senshu District to minimize the impacts of aircraft noise. Waste and wastewater generated inside the airport are treated onsite. In addition, seaweed beds have formed in the seawall surrounding the manmade airport island that create a habitat for a variety of marine life.

#### Overview

Location : Izumisano City, Tajiri Town, Sennan City in Osaka  
Scale : 1,055ha  
Runways : Runway A : 3,500m long, 60m wide  
Runway B : 4,000m long, 60m wide

## ITAMI Osaka International Airport



### Osaka International Airport

Located near the heart of the Keihanshin metropolitan area, these airports are adjacent to urban areas. We are making efforts to reduce aircraft noise through promoting introduction of low-noise aircraft and to improve the living environments in the regions of the airport through environmental countermeasures.

#### Overview

Location : Toyonaka City, Ikeda City in Osaka, Itami City in Hyogo  
Scale : 311ha  
Runways : Runway A : 1,828m long, 45m wide  
Runway B : 3,000m long, 60m wide

## KOBE Kobe Airport

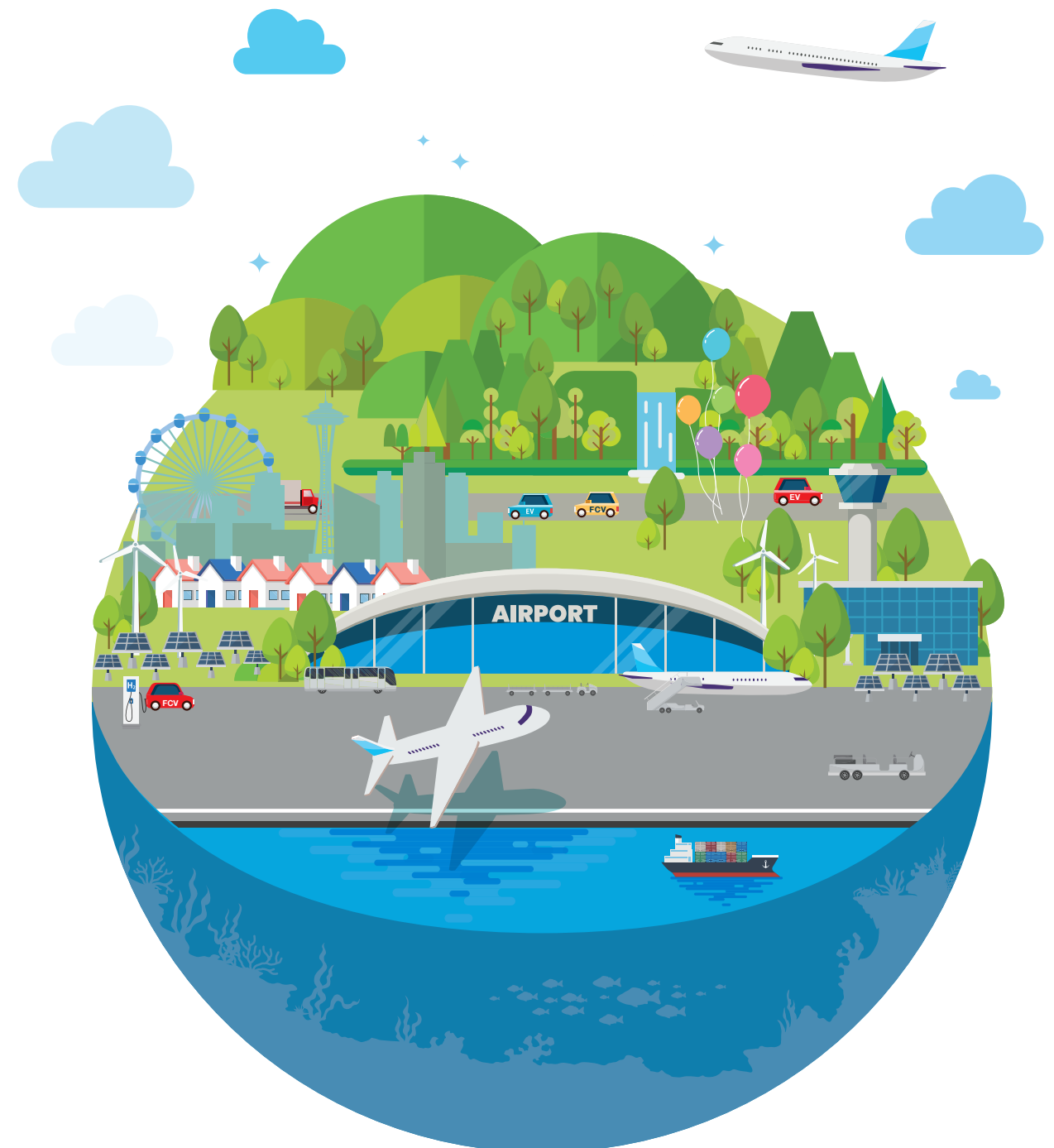


### Kobe Airport

KOBE was built on the sea in harmony with the environment. We make sure to reduce our environmental impact by incorporating a cogeneration system in the passenger terminal building and collecting and reusing rainwater.

#### Overview

Location : Kobe City in Hyogo  
Scale : 272ha  
Runway : 2,500m long, 60m wide



Environmental Report  
<http://www.kansai-airports.co.jp/en/efforts/environment/reports/>

March 2023

## Kansai Airports Group contributes to a sustainable society by promoting initiatives for decarbonization, circular economy, and environmental symbiosis.



We have formulated **Kansai Airports Group Environmental Vision 2050** building on our **Environmental Philosophy** and **Basic Environmental Policy**.

We have also set the **Environmental Goals 2030**, our action plans towards FY2030 goals, under the Environmental Vision 2050.

### Environmental Philosophy

We, Kansai Airports Group, recognize the importance of solving environmental problems on a global scale and contribute to the realization of a sustainable society through the operation of airports, which are public infrastructure.

### Basic Environmental Policy

- Each employee of the group will diligently preserve the global environment in their daily work.
- We will clarify the environmental impact of our business activities, set goals to reduce it, and take proactive measures.
- We will regularly check on the progress of initiatives and work to improve the content.
- We will play a pioneering role in the airport field. Furthermore, we will contribute to reducing the environmental burden by overall airports, including the aviation sector.
- We will communicate with all stakeholders involved in airports and communities.

### Environmental Management

#### • Environmental Promotion Structure

Kansai Airports Group has established an environmental promotion system to promote group-wide environmental activities. Under the Group Environmental Promotion Committee (chaired by the CEO and Co-CEO), which consists of the heads of divisions and group companies, each division and group company implements the action plans it has formulated and regularly assesses and reports on them to improve its initiatives.

We are also promoting environmental initiatives in cooperation with airport-related businesses through the Airport Environmental Promotion Councils of the three airports and the Airport Decarbonization Promotion Councils established by the airport administrator.

#### • Raise awareness

Environmental training will be conducted for all employees in order to foster a culture in which each employee diligently self-improves and promotes environmental initiatives in their daily work.

#### • Acquire a certification

Our progress will be reviewed by utilizing third-party verification, while aligning with our goals.



## Environmental Vision 2050 and Environmental Goals 2030

We are now facing various ever-growing environmental issues such as climate change and depletion of energy and resources. Kansai Airports Group, through airport operations, contributes to a decarbonized society, a circular society, and an environmental symbiosis society that is in harmony with nature and local communities.

The "Environmental Vision 2050" sets the long-term vision of the Kansai Airports Group, while the "Environmental Goals 2030" sets specific milestone targets for achieving the vision.



### Decarbonization



#### Environmental Vision 2050

- Net zero greenhouse gas emissions in business activities of Kansai Airports Group
- Contribution to the reduction of greenhouse gas emissions for the entire airports, including airport-related businesses

#### Environmental Goals 2030

- Reduce greenhouse gas emissions by Kansai Airports Group by 50% from the FY2016 level

#### Major initiatives

- Promotion of energy conservation
- Use of renewable energy and hydrogen
- Promotion of the Zero Emission Vehicles introduction

### Circular economy



#### Zero Waste Airport

- ▷ Thorough reduction, sorting and recycling
- ▷ Recycling rate: 100%

- Not to increase the amount of incinerated waste of the entire airports from the FY2016 level
- Reduce the amount of single-use plastic by Kansai Airports Group by 30% from the FY2016 level

#### Major initiatives

- Use of eco-friendly materials
- Reduction of plastics, conversion of materials and closed-loop recycling
- Further reduction, sorting and recycling of combustible waste

### Environmental symbiosis



- Ensuring a healthy living environment around the airports
  - ▷ Monitoring aircraft noise and the surrounding environment
- Symbiosis with nature
  - ▷ Efficient use of water resources
  - ▷ Conservation of water and soil environments
  - ▷ Contributing to ensuring a healthy ecosystem

- Continue appropriate and steady monitoring of noise and the surrounding environment
- Not to increase the total water use of the entire airports from the FY2016 level
- Reduce the clean water use by Kansai Airports Group by 15% from the FY2016 level
- Conservation of biodiversity

#### Major initiatives

- Monitoring of aircraft noise and surrounding environment
- Active utilization of grey water (recycled water and rainwater) and enhanced water conservation operations
- Maintaining the rich seaweed bed environment